

François-Xavier LALANNE (1927-2008)

SINGE I or SINGE PERCHÉ (1992)

Bronze, H : 74,5 cm, L : 15,8 cm, D : 20,3 cm

Original limited edition with the «FXL» monogram and "SIA", numbered «EA 1/4», cast by "Clementi fondeur" (inscription).

Circa: 1992-1994

Provenance:

Galerie JGM, Paris.

Private Collection, Switzerland (invoice from the JGM Gallery,

October 19th 1994)

Private Collection, Switzerland 3



Barye like the first Animal Sculptors of the 19th century designed their animal representations with a terrace. The base was often a naturalist one, with a profile of architectural lines; and there is even sometimes, to highlight the model and not to miss them, a marble repetition that enhances the work a second time.

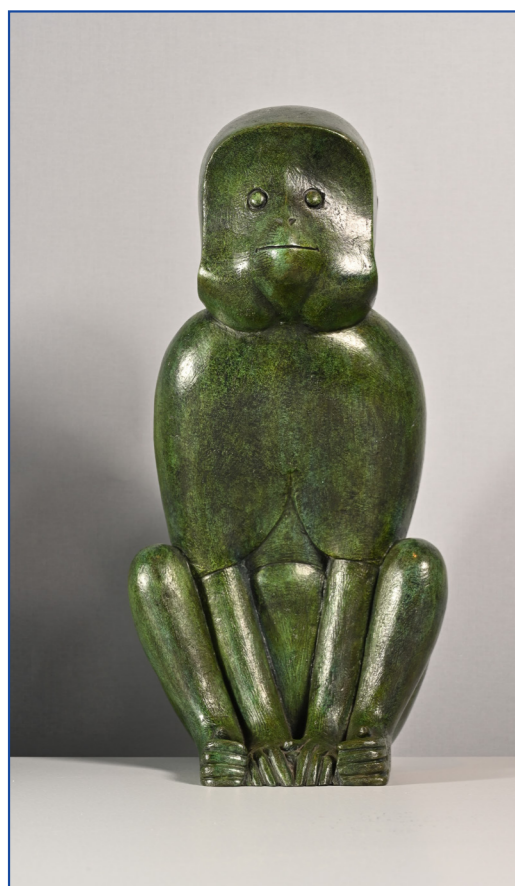
This choice eased in the 20th century with the development of animals without terraces, as the most popular among them, the *Ours blanc* by Pompon, or some by Bugatti like his *Boa snake* and the *sheep Merinos*.

For François-Xavier Lalanne, terrace's lack is a rule. And the artist goes even further, with the case of the *Singe perché* whose tail seems to escape from any base and floats in space.

This treatment is an innovation in the Art History and it is above all a success, because of an unexpected simplification of Form without reduction of substance, which avoids anecdote which is so common in animal art.

With Claude Lalanne, who carries the surrealist vision of the couple, they have developed a bestiary and a corpus of furniture, two and four hands, which place them with Diego Giacometti at the forefront of Decorative Arts in Art History.

It exists four variants of *Singe perché*, head turned or facing front, fore-paws on the knees or on the ground. This one is the Monkey I, head up, paws on the ground.





ABOUT THE RESULTS FOR *SINGE PERCHÉ* BY LALANNE

1. Singe attentif I, *gilt bronze*, H. 76,5 cm
2. Singe attentif II, *gilt bronze*, H. 76,5cm
3. Singe Alternatif II, *bronze*, H72 cm
4. Singe Attentif, *gilt bronze*, H76cm
5. Singe II, *bronze*, H75,6 cm
6. Singe II, *bronze*, H. 74 cm
7. Singe attentif, *silver*, H. 74 cm
8. Singe attentif, *silver*, H; 74 cm
9. Singe attentif II, *bronze*, H 77cm
10. Singe II, *bronze*, H74 cm
11. Singe I; *bronze*, H73,1 cm,
12. Singe II, *bronze*, H. 73,1 cm
13. Singe II, *bronze* H74 cm

Sotheby's 8/12/2022
Sotheby's 8/12/2022
Sotheby's 3/11/2022
Christie's 20/10/2022
Sotheby's 08/12/2021
Sotheby's 23/11/2021
Christie's 21/10/2021
Christie's 21/10/2021
Christie's 14/09/2021
Sotheby's, 23/09/2020
Sotheby's 12/12/2019
Sotheby's 12/12/2019
Sotheby's 24/10/2019

Price with premium

1 730 365 €
1 483 170 €
1 729 000 €
1 430 000 €
1 145 579 €
1 585 500 €
1 950 000 €
1 940 000 €
2 120 000 €
926 470 €
773 974 €
827 972 €
1 332 500 €



1.



2.



3.



4.



5.



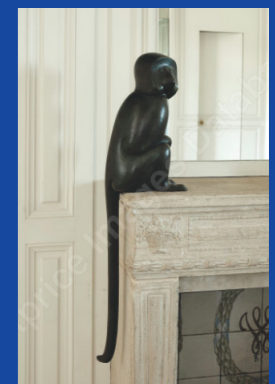
6.



7.



8.



9.



10.



11.



12.



13.